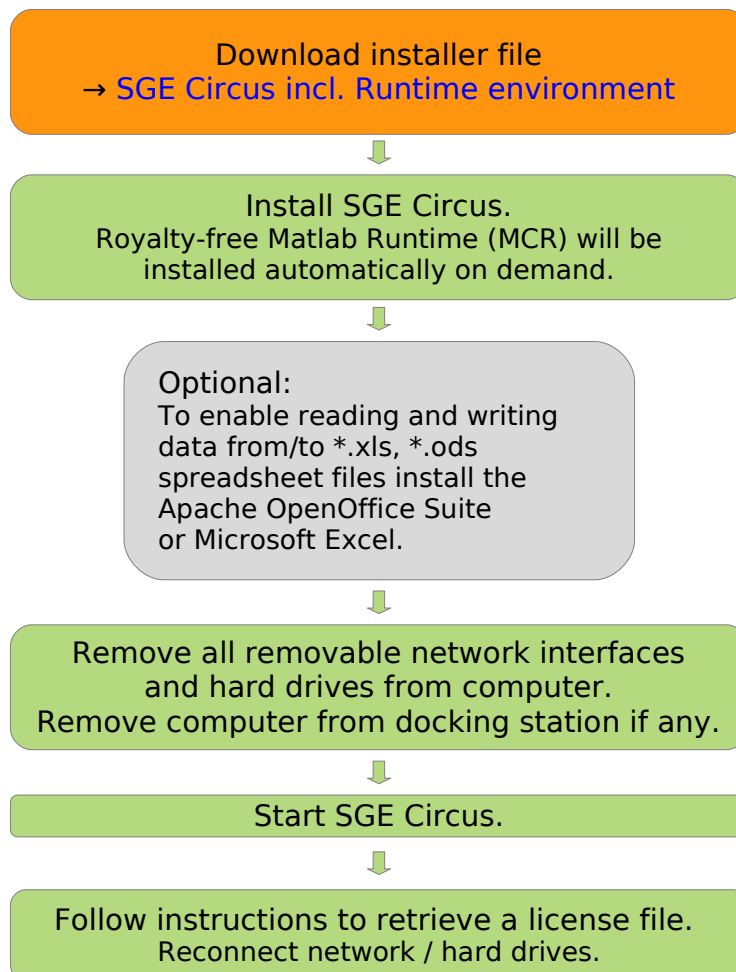




SGE Circus Standard Installation Manual

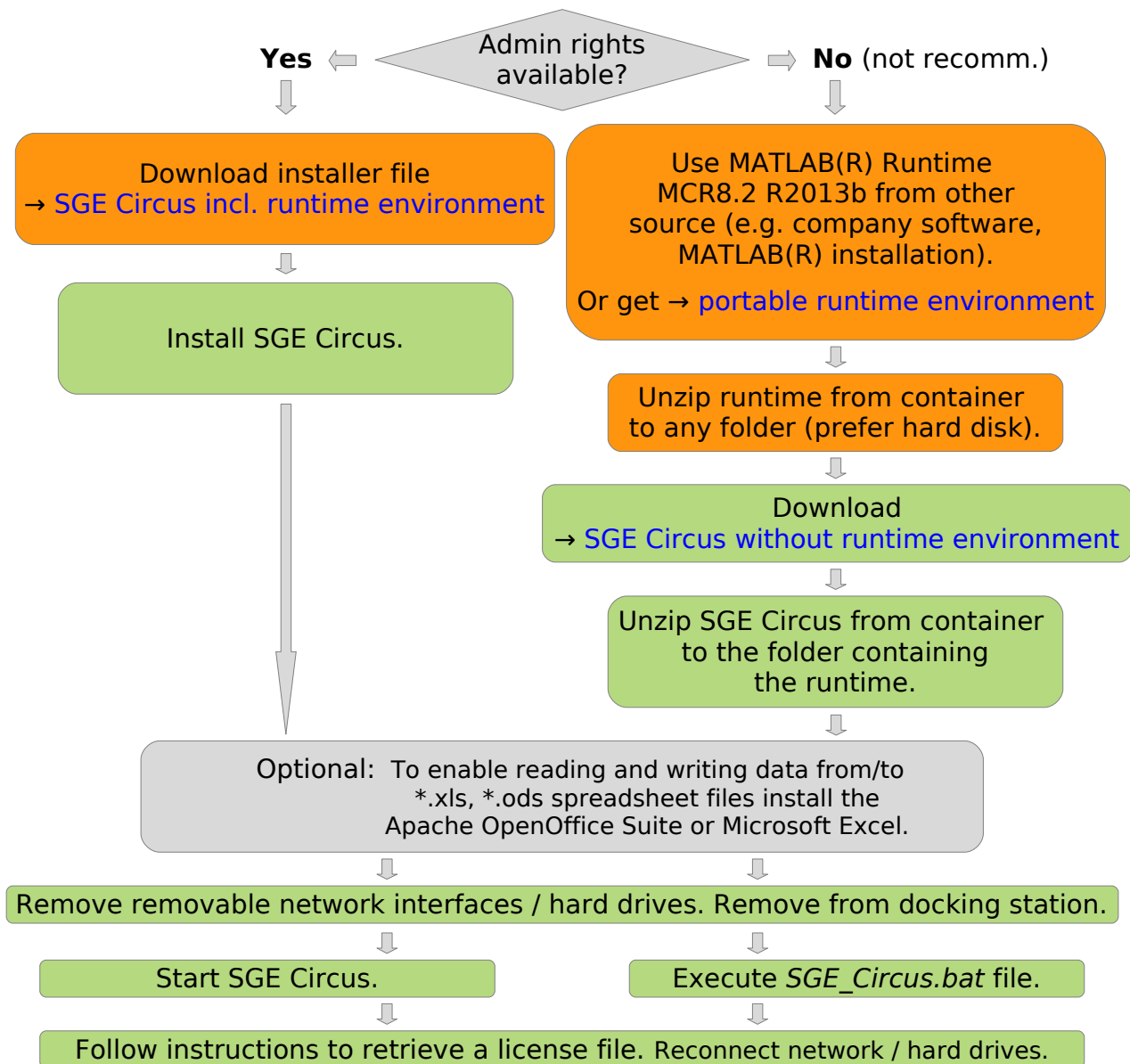
Admin rights and internet connection must be available.



Microsoft and Microsoft Excel are either registered trademarks or trademarks of Microsoft Corporation in the United States and/or other countries. Apache and OpenOffice are trademarks of The Apache Software Foundation.



SGE Circus Special Installation Manual



Microsoft and Microsoft Excel are either registered trademarks or trademarks of Microsoft Corporation in the United States and/or other countries. Apache and OpenOffice are trademarks of The Apache Software Foundation.



Link Section

If the links in the sections above do not work on your system all files needed for installation can be retrieved from the download section on our homepage:

<http://sge-ing.de/en.php#sge-circus-download>

Troubleshooting

• Installation without admin rights

To install the SGE Circus without admin rights you first need to get the royalty-free MATLAB(R) runtime MCR8.2 R2013b using one of the following options:

- Retrieve the MATLAB(R) runtime from your company software distribution.
- Use the MATLAB(R) runtime automatically shipped with a Matlab R2013b installation.
- Download and extract the MATLAB(R) runtime portable edition. See the special installation instructions above for details.

After installation of the MATLAB(R) runtime the SGE Circus may be extracted and operated from SGE Circus container without admin rights.

• Installation slow and unresponsive

During the installation long lasting tasks and downloads are performed. Sometimes no progress is visible during these tasks. Please be patient and wait for the installation to finish.

• Startup debugging

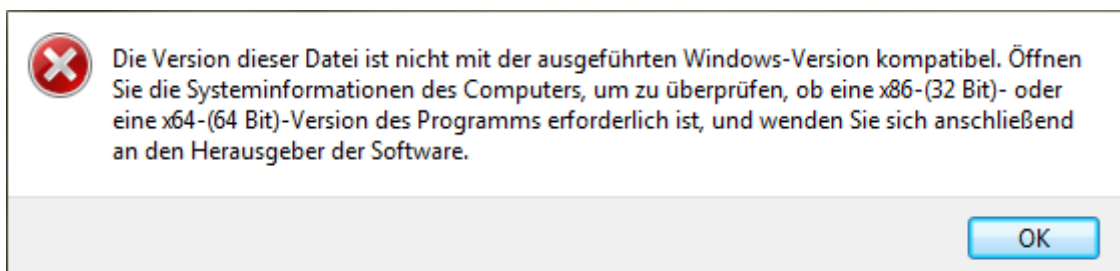
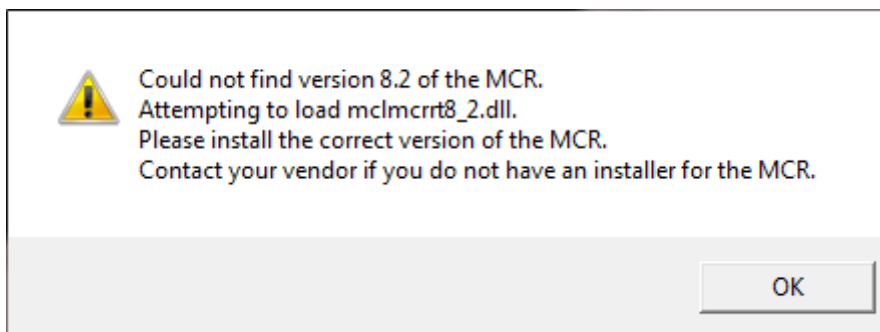
If you experience problems starting the SGE Circus it is helpful to execute it from a manually started command window to keep the messages prompted. Therefore:

- Start a command window from the operating system Start menu.
- Change to the directory containing the SGE_Circus.exe, for example by entering "cd %AppData%\SGE_Circus" and pressing Return.
- Increase the logging verbosity by entering "set MCR_CACHE_VERBOSE=1" and pressing Return.



- Enter "SGE_Circus.exe", press Return and survey the message output.
- **Error "Could not find version ... of the MCR", "... not compatible ..."**

If you experience one of the following errors the matching MCR version for your computer architecture was not found. Make sure to obey the installation instructions and choose the correct installer matching your architecture (32bit, 64bit). The architecture can be identified using the Control Panel of the operating system.



- **Installation successful, but SGE Circus terminating immediately**

If other software using Matlab Compiler Runtime is installed probably the environment variable MCR_CACHE_ROOT was set by the software to a location not accessible by the SGE Circus. Make sure that the location the environment variable points to is accessible or create a batch file to set the environment variable to a accessible location and start the SGE Circus afterwards. See the SGE Circus manual for further information.



- **SGE Circus startup time is very long**

The process of extracting components to a temporary directory during first startup lasts some time. If the temporary directories on your system get deleted frequently this is done every time you start the SGE Circus. To avoid this performance loss you might declare the environment variable "MCR_CACHE_ROOT" pointing to a fast accessible permanent location. This might be done in your operating system or using a batch file that declares the environment variable and starts the SGE Circus afterwards. See the SGE Circus manual for further information.